



40
MIL

NATURES VIEW STYLE RUSTIQUE

18" X 18" LUXURY VINYL TILES

- **INSPIRED BEAUTY**
Eleven natural stone looks to choose from
- **DESIGNED TO LAST**
Resilient vinyl for high-traffic areas
- **SLIP RESISTANT**
exceeds ADA slip resistance standards
- **MAKE IT YOUR OWN**
Versatile styles bring limitless design possibilities



The form and function of luxury vinyl combined with the look and texture of natural stone and stained concrete.

Available in 11 distinctive styles, Natures View Style Rustique 18" x 18" Luxury Vinyl Tile enhances any design concept with its natural stone look. Its resilient 40mil wear layer and annealed construction protect your investment with superior performance in even high-traffic areas.

By offering longevity and ease of vinyl and adding the look and texture of natural materials, your luxury stone vinyl tile design choice is Natures View.

SOLUTIONS FOR EVERY ENVIRONMENT
1+ 866 284 6287 | www.vangelder-inc.com



01. Mink Slate VNHT403



02. Oxidized Pewter NVC1737



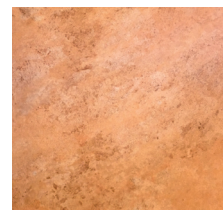
03. Oyster NVC1738



04. Toasted Almond NVC1739



05. River Rock NVC2891



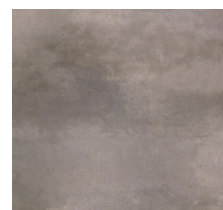
06. Limestone NV3061



07. Metallic Delight NVC2893



08. Ostrich Grey NVC3879



09. Urban Grey NVC3342



10. Silver Knight NVC3744*



11. Titanium NVC3724*

*Indicates available
in 18" x 36" tiles as
well.

NATURES VIEW STYLE RUSTIQUE

18" X 18" LUXURY VINYL TILES



SUGGESTED USES

Beauty Salons, Conference Rooms, Corporate Lunchrooms, General Office, Hospitals, Libraries, Pharmacies, Retail/Department Stores, Resorts, Restaurants, Spas and Supermarkets

Overall Thickness	3.175mm 0.125"
Wear Layer Thickness	1.0mm 40mil
Tile Size	18" x 18"

LIMITED WARRANTY

Full Commercial Warranty	21 years
Summary of Warranty	

*For a copy of the full warranty please ask for a warranty sheet Natures View tiles must be professionally installed to validate the warranty. van Gelder, Inc. warrants Natures View Style Rustique first quality planks against wear for a period of 21 years in a commercial application.

This warranty applies only to material that is properly installed and maintained, while being used as intended and recommended. If the defect is covered by this warranty and is reported to van Gelder, Inc. within the warranty period, van Gelder, Inc. will supply new material of same or similar grade to repair or replace the defective material.

- **Wear**
Defined as complete removal of wear layer, pattern and color due to wear from normal traffic and maintenance. If the wear occurs within 21 years from date of purchase, van Gelder, Inc. will provide replacement materials or repair, of only the effected area.
- **Manufacturing Defects**
van Gelder, Inc. warrants Style Rustique first quality tile materials are free from manufacturing defects and will replace defective floor covering and reasonable installation costs for a period of up to one [1] year from date of purchase. van Gelder, Inc. will not pay labor costs to repair or replace materials that defects were apparent before or at the time of installation.
- **Other Limitations**
 - This warranty is non-transferable.
 - Manufacturing defect must be reported within 3 months from date of purchase.
 - This Warranty covers only properly installed & maintained floors.
 - van Gelder, Inc. excluded and will not pay for any consequential or incidental expenses.
 - van Gelder, Inc. reserves the right of final judgment and may refuse claims in certain instances.

PACKING & DIMENSIONS

Tile 18" x 18"	16 tiles/carton
Sq. Ft. per carton:	36 sq. ft
Overall Thickness	3.175mm 0.125"
Wear Layer Thickness	1.0mm 40mil
Weight:	35.78 lbs./carton

TECHNICAL SPECIFICATIONS

Stability (EN 986)	Pass
Abrasion Resistance (EN 660)	Excellent (<0.15g/1000 cycles)
Static Load (ASTM F970 - Modified)	2000 psi
Sound Insulation (DIN 52210)	4dB
Slip Resistance (ASTM D 2047)	Pass (Exceeds ADA Recommendations)
Stain & Chemical Resistance (ASTM 925)	Pass
Light Resistance (F 1515)	Pass
Indentation Resistance (F 1914)	Pass (<8%)

FLAMMABILITY RATING

Radiant Panel Test (ASTM E648)	Class 1
Smoke Density (ASTM E662)	Pass (<450 sdi)
Heat Stability (ASTM 1514)	Pass
HUD/FHA Requirements	Exceeds

EXPERIENCE IT FOR YOURSELF

Talk with your sales representative or request samples at samples@vangelder-inc.com

INSTALLATION

Surface Preparation: Sub floor (wood or concrete) must be structurally sound, clean, smooth, dry free from dust, dirt, wax, grease, and/or any other foreign material that would interfere with a good bond. DO NOT USE adhesives where moisture is present in concrete or wood-type sub floors. Moisture may retard or prevent adhesive from setting.

Primer: Latex primer acts like a sealer but allows adhesion of the tiles to the concrete floors. It also helps preventing moisture from getting between the tiles and sub floor. Tools required: Utility knife, carpenter square, chalk, string, pencil and rolling pin.

INSTALLATION GUIDE

Style Rustique tile and adhesive must be conditioned at room temperature, minimum 65°F for 24 hours before and 24 hours after installation. Porous Substrate- Spread adhesive with a 1/16" x 1/16" square trowel. Non-Porous substrate will require a 1/16" x 1/32" x 1/32" U notch trowel. Apply adhesive to sub floor according to the instructions on the container. Spread adhesives over a small area to avoid letting the adhesive dry too much before you have finished laying your plank. Planks use the wet set installation instructions. Roll each section immediately upon completing with a 100 lbs. three-section roller. Re-roll the entire floor after one or two hours. If you do not have a roller, then use a rolling pin and your body weight. Do not wash or treat the floor for a minimum of 48 hours after installation. For a complete guide go to our website or call your rep.

MAINTENANCE

We recommend using a non-rising cleaner that leaves no film and suggest that you vacuum, sweep or dust mop twice per week. High-traffic areas might require more frequent cleaning. Wipe up food and other spills immediately using recommended cleaner and a soft cloth. You should NEVER USE ABRASIVE CLEANERS, POWDERS, OIL CLEANERS, WAXES OR DISH DETERGENT. These will scratch the surface or leave a film. When using a vacuum, if possible turn off the beater and use a hose or wand with an upholstery attachment. Vacuum wheel may also be a source for indenting and scuffing, check the wheels for embedded grit.

To remove scuff marks you can use a soft cloth to rub it out. If they difficult to remove try using a product named "Oops Painter Wipes". Rinse the area well afterwards with clean warm water and allow to dry. Please note that these procedures may help remove stains from vinyl floors, but cannot guarantee complete removal. Burns, holes or "permanent" stains may require a replacement "patch of that section of the floor.

To remove damaged tiles you can use a hair dryer, which heats up the adhesive allowing the tile to be picked up. When the tile is up, use a wide blade putty knife and pull it out, then put the new tile down once the surface has been prepared. You should NEVER USE A HEAT GUN as this emits too much heat and will damage the tiles.

IMPORTANT NOTICE

Sample swatches have been cut from an overall design, decoration & shade may vary. The random nature of wood and other natural materials from which our patterns are designed means that significant color and design variation is normal and enhances the look of the tile.

YOUR AUTHORIZED SALES REPRESENTATIVE:

VG_NV18x18_102522

van Gelder, Inc.
www.vangelder-inc.com
+1 866 284 6287

