



MONSTER TILE SERIES

RECYCLED RUBBER FLOORING

A classic combination of performance & design.

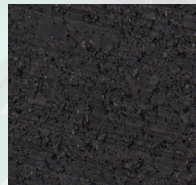
Versatile and easy to install Monster Tiles have the specialized shock absorption athletes need. Whether taking advantage of the “bounce back” effect when lifting heavy loads, or lessening noise and vibration from the impact, these two-by-two-foot Tiles are the workhorse for your facility.

Offered in a wide range of colors, Monster Tile gives you the ability to tailor your space and complement the aesthetics of your gym. The highest quality rubber gym flooring available.

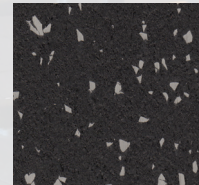
- Ideal flooring for facilities with heavy impact areas
- Improved shock absorption
- Long life-span
- Inexpensive maintenance costs

SOLUTIONS FOR EVERY ENVIRONMENT
1+ 866 284 6287 | www.vangelder-inc.com

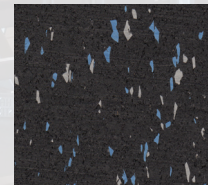
100 Series



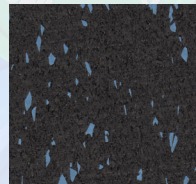
01. Black MT-106



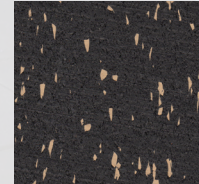
02. Lt. Grey MT-125



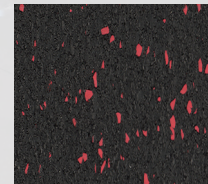
03. Blue/Lt. Grey MT-122



04. Blue MT-127

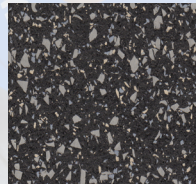


05. Tan Clay MT-149



06. Red MT-109

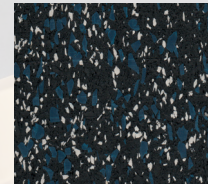
350 Series



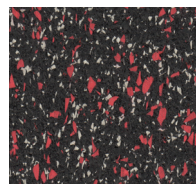
01. Milky Way MT-503



02. Salt & Pepper MT-526

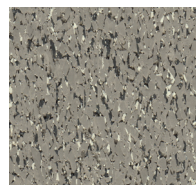


03. Blue Bahia MT-523

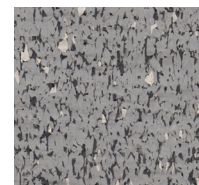


04. Rouge MT-524

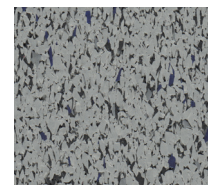
950 Series



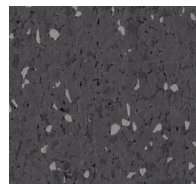
01. Graphite MT-954



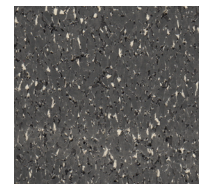
02. Avalanche MT-4244



03. Mica MT-951



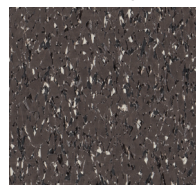
04. Granite Grey MT-4247



05. Storm Cloud MT-952



06. Sandstone MT-956



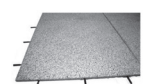
07. Hot Chocolate MT-953



Bottom of Tile



Dowels



Installation

MONSTER TILE SERIES

HEAVY DUTY RUBBER FLOORING



SUGGESTED USES

Weight Rooms, Home Gyms, Fitness Centers, Health Clubs, Crossfit (Platforms), Free Weight Areas, Strength & Conditioning Areas, Schools and Universities, Play Areas, and Ice Skating Facilities, etc.

Construction:	100% Recycled SBR Rubber % selected of EPDM granules & polyurethane binder
Tile Size:	24" x 24" x 1"
Tile Weight:	18.0 lbs/tile
Standard Reducer Dimensions:	1' x 4' x 48'
Standard Reducer Weight:	4 lbs. per reducer
ADA Reducer Dimensions:	1' x 12' x 48'
ADA Reducer Weight:	14 lbs. per reducer
Density Top Layer (ASTM D3676):	60-80 pcf (Depends on surface color)
Shore A Hardness (ASTM D2240):	60 ± 5
Tear Strength (ASTM D2240):	70 pli min.
Elongation (ASTM D412):	>150%
Tensile Strength (ASTM D412):	>200psi
Resistance to Chemicals (ASTM F925):	No Change
Coefficient of Friction (ASTM D2047):	>0.95
Impact Insulation Class (IIC) (ASTM E492):	STC:> 54, IIC: > 57, ΔIIC: > 27
Critical Radiant Flux (ASTM E648):	Class II
Force Reduction (ASTM F2772):	<50%

PACKING & DIMENSIONS

Size	Colors	Thickness
24" x 24" x 1" Square Tiles	100 series - 6 colors listed	25.4mm (1") Thick @ 4 sq. ft./Tile
24" x 24" x 1" Square Tiles	350 series - 4 colors listed	25.4mm (1") Thick @ 4 sq. ft./Tile
24" x 24" x 1" Square Tiles	950 series - 7 colors listed	25.4mm (1") Thick @ 4 sq. ft./Tile

NOTE: Dowels Must be used for installation - 6 dowels needed/ tile

LEED-NC

MR CREDIT 4, IEQ CREDITS 4.1, 5

LIMITED WARRANTY

Full Commercial Warranty 10 years
Summary of Warranty

Products must be professionally installed to validate the warranty. van Gelder Inc. warrants Monster Tiles against wear for a period of 10 years in a commercial application. This warranty applies only to material that is properly installed and maintained, while being used as intended and recommended. If the defect is covered by this warranty and is reported to van Gelder Inc. within the warranty period, van Gelder Inc. will supply new material of same or similar grade to repair or replace the defective material.

- Wear
Defined as complete removal of wear layer, pattern and color due to wear from normal traffic and maintenance. If the wear occurs within 5 years from date of purchase, van Gelder Inc. will provide replacement materials or repair, of only the effected area.

- Manufacturing Defects
van Gelder Inc. warrants Monster Tile materials are free from manufacturing defects and will replace defective floor covering and reasonable installation costs for a period of up to one [1] year from date of purchase. van Gelder Inc. will not pay labor costs to repair or replace materials that defects were apparent before or at the time of installation.
- Other Limitations
 - This warranty is non-transferable.
 - Manufacturing defect must be reported within 3 months from date of purchase.
 - This warranty covers only properly installed & maintained floors.
 - van Gelder Inc. excluded and will not pay for any consequential or incidental expenses.
 - van Gelder Inc. reserves the right of final judgment and may refuse claims in certain instances.

*For a copy of the full warranty please ask for a warranty sheet.

INITIAL CLEANING

Do not wash floor for at least 5 days after installation. An initial cleaning needs to be done to remove any dirt and grit from the job site and to prepare the floor prior to applying a sealer or finish. Failure to clean properly will cause finish bonding issues as well as the entrapment of dirt in the floor. To avoid possible damage to the flooring, the following should never be used on the floor:

- Steel wool or abrasive brushes
- Abrasive or alkaline cleaners
- Solvents of any type

MAINTENANCE

A regular maintenance program is extremely important and will increase the life of the floor and finish. The frequency of cleaning will depend of the amount of traffic on the floor. For general cleaning, a neutral cleaner should be used.

1. Thoroughly sweep or vacuum the floor to remove all loose dirt, dust and debris.
2. Apply a neutral cleaner to the floor with a mop (or automatic floor scrubber). Follow the manufacturer's instructions.
3. Use a wet vac or mop to remove cleaning solution.
4. Rinse floor with clean, cold water. Remove all water with wet vac or mop. Allow rubber floor to dry thoroughly.

IMPORTANT

To prevent slip and fall accidents, ALWAYS use a "WET FLOOR" sign when wet rubber flooring has been cleaned and is open to floor traffic.

IMPORTANT NOTICE

Sample swatches have been cut from an overall design; decoration and shade may vary.

YOUR AUTHORIZED SALES REPRESENTATIVE:

VG_ISS_ELEMENTS950_100523



van Gelder, Inc.
www.vangelder-inc.com
+1 866 284 6287

EXPERIENCE IT FOR YOURSELF

Talk with your sales representative or request samples at samples@vangelder-inc.com